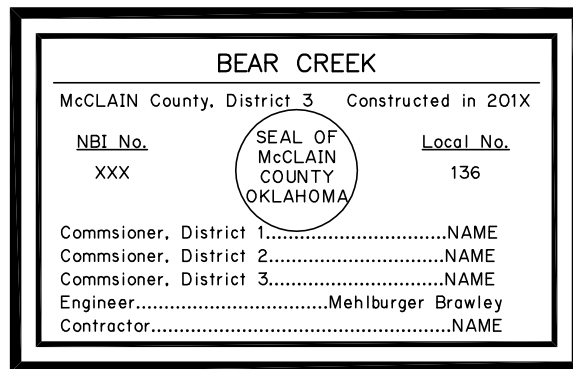


BRIDGE PLAQUE DETAIL



CONTRACTOR TO PROVIDE AND INSTALL BRIDGE PLAQUE UPON COMPLETION OF PROJECT. COST TO BE INCLUDED IN OTHER ITEMS OF WORK. PLAQUE SIZE TO BE A MINIMUM OF 12"x10"x1/4" AND MADE FROM EITHER ZINC OR BRONZE. PROOF OF PLAQUE TO BE SUBMITTED TO COUNTY AND ENGINEER FOR APPROVAL PRIOR TO MANUFACTURING.

SUMMARY OF BRIDGE QUANTITIES						
ITEM NO.		DESCRIPTION	UNIT	ABUTS.	SUPSTR.	TOTAL
501(B)	1307	SUBSTR. EXCAV. COMMON	C.Y.	190.00	0.00	190.00
501(F)	6352	GRANULAR BACKFILL	C.Y.	76.00	0.00	76.00
503(A)	1311	PRESTRESSED CONCRETE BEAMS (TYPE II)	L.F.	149.00	0.00	149.00
504(B)	1305	SAW-CUT GROOVING	S.Y.	0.00	132.00	132.00
504(D)	6239	CONCRETE RAIL (TR3)	L.F.	57.60	110.50	168.10
506(A)	1322	STRUCTURAL STEEL	LB.	0.00	580.00	580.00
507(A)	6172	WEATHERING STEEL FIXED BEARING ASSEMBLIES	EA.	0.00	3.00	3.00
507(B)	6176	WEATHERING STEEL EXP. BEARING ASSEMBLIES	EA.	0.00	3.00	3.00
509(A)	1326	CLASS AA CONCRETE	C.Y.	0.00	43.60	43.60
509(B)	1328	CLASS A CONCRETE	C.Y.	68.00	0.00	68.00
511(A)	1332	REINFORCING STEEL	LB.	9780.00	12570.00	22350.00
514(A)	6010	PILES, FURNISHED (HP 10X42)	L.F.	232.00	0.00	232.00
514(A)	6011	PILES, FURNISHED (HP 12x53)	L.F.	557.00	0.00	557.00
514(B)	6292	PILES, DRIVEN (HP 10X42)	L.F.	232.00	0.00	232.00
514(B)	6294	PILES, DRIVEN (HP 12x53)	L.F.	557.00	0.00	557.00
514(L)	6220	PILE SPLICE, H-PILE (NON-BIDDABLE)	EA.	1.00	0.00	1.00
601(B)	1353	TYPE I-A PLAIN RIPRAP	TON	774.00	0.00	774.00
601(C)	1355	TYPE I-A FILTER BLANKET	TON	200.00	0.00	200.00
613(H)	6204	6" PERFORATED PIPE UNDERDRAIN ROUND	L.F.	60.00	0.00	60.00
613(I)	6207	6" NON-PERFORATED PIPE UNDERDRAIN ROUND	L.F.	80.00	0.00	80.00
619(D)	1397	REMOVAL OF EXISTING BRIDGE STRUCTURE	L.S.	0.00	1.00	1.00

BRIDGE 'A' @ STA. 130+30.00
 1-50' PC BEAM SPAN. SKEW 30 RF. 26'-0" CLR. RDWY.
 W/ 1'-1" CONC. TRAFFIC RAILS (TR3-2)